

POLYMER WEEK

advent calendar



7

CHARMING GHOST CHARACTER

by Andy Bell

What about making something charming, like this little ghost character wearing a rustic hat and stitched patches? Together with Andy Bell, you will learn how to sculpt a fridge magnet full of personality, with soft folds, textured surfaces and hand-painted details. Andy's characters are rooted in the charm of imperfection, embracing asymmetry, handmade beauty, and natural flaws. And this little ghost captures all of it perfectly.

POLYMER WEEK

advent calendar

TOOLS & SUPPLIES

POLYMER CLAY

- Cosclay white
- liquid polymer clay

MATERIALS

- acrylic paints (white, black, red, green, yellow, brown...)
- flat magnet
- paper towel
- super glue
- clay softener (optional)

TOOLS

- tile or baking surface
- sculpting tools
- stiff blade
- small ball tool
- sculpting burnisher or large ball tools
- small rough brush
- fine paint brushes
- scalpel
- pasta machine (optional)
- toothpick



Condition white polymer clay. Take a tile or suitable baking surface and press on a rounded cone shape that protrudes more at the bottom of the cone than at the top.



Try to keep it relatively thin. If it is too heavy, the magnet might not support it.



Drag in some gentle creases using your finger. Start with light pressure near the top and gradually press deeper as you move toward the bottom so the folds look natural.



Refine these creases with a sculpting burnisher tool, sharpening the deeper folds and smoothing any uneven areas.



Trim off some of the bottom with a stiff blade to get a nice clean edge.



Roll a thinner sheet of clay for the hat brim and cut it into an oval shape.



Gently lift up the head from the tile and place the hat brim partially under it.



Shape the front of the brim to create a nice curved shape over the head.

POLYMER WEEK



9

Add on an egg shape to create the top of the hat.



10

Using a ball tool, press in holes for the eyes and nose, and use a sculpting tool to create the mouth.



11

Roll two thin snakes of clay.



12

Twist them together to create the rope that holds his nose in place.



13

Using the nose hole as a guide, attach the rope to the face and trim off the excess. Press in the nose hole again over the rope.



14

Create a small cone shape for his nose and press it into the hole. You can use a little liquid clay as adhesive if it doesn't stick well.



15

Roll out a thin sheet and cut a strip for the ribbon around his hat.



16

Attach the ribbon to the hat and trim off the excess.

POLYMER WEEK



Using a sculpting tool, press in some creases into the ribbon.



Roll one final thin sheet and cut some patches.



Place the patches on the body wherever you prefer.



Using a sculpting tool, create some rough stitched edges to the patches.

POLYMER WEEK



21

Use a rough brush to create a textured surface and remove any fingerprints. The rougher the texture, the more it will stand out when we come to paint it. You can brush on some clay softener to create more texture.



22

Bake for 30 minutes at 130°C.



23

Paint with acrylic paints in the flat colours of each element.



24

Once the first layer is dry, add in any painted details like stripes and spots.

POLYMER WEEK



Water down some brown paint to create a wash and brush this over the whole sculpt to bring out the texture.



Build up in layers. Use some extra around the edges of sculpted detail to make them pop.



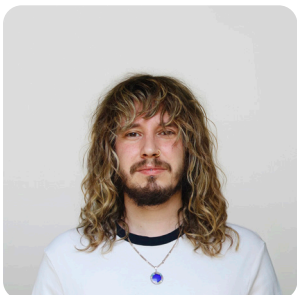
Paint the back of the sculpture with black paint.



Glue a magnet onto the back. And place on the fridge to enjoy!

FINAL PROJECT





ANDY BELL

With a love for character creation, stop-motion, animation, and film, Andy Bell brings a fresh and playful approach to polymer clay, using it to transform his quirky designs into expressive posable figures. He has worked on numerous commercials and children's TV productions, and is also known for his contributions to major stop-motion films such as *Isle of Dogs* and *Pinocchio*.

@andybellart