



SPACE BROOCH

This tutorial explores the use of diverse colors, textures, surface treatments, and layered components to craft a striking and dynamic design. Inspired by themes of space, AI, and technology, Nadia Lunkina created a captivating brooch featuring decorated circles with unique patterns. Ready to give it a try?

ABOUT NADIA LUNKINA

Nadia Lunkina, currently based in Israel, studied art and ceramics and has spent the past thirteen years working with polymer clay. Over time, she developed a deep appreciation for the material, transforming her passion for crafting intricate and charming clay pieces into creating contemporary, modern designs that beautifully reflect her personality and experience.

www.instagram.com/joy_as_a_gift





PRODUCTS IN THE ADVENT CALENDAR

CERNIT CLAY - GOLD & PEARL COLOR

Cernit polymer clay, originally from Belgium, is a favorite among European and international artists alike. The Pearl line features a stunning shimmer, enhanced by bold, large-flake mica for maximum sparkle.

LIST OF TOOLS AND MATERIALS

- Cernit polymer clay - gold and pearl
- liquid clay
- round cutters \varnothing 3.5, 3, 2.5, 1 cm
- bronze ball pins
- pasta machine, roller
- 6 pcs rare earth magnets \varnothing 10 mm
- scalpel
- rigid blade
- Lucy Struncova´s color pigment - black and gold
- Silkscreen Set designed by Lyne Tilt
- Lucy Struncova´s Texture Stamp 1
- gloves
- black acrylic paint
- toothpick
- cornstarch
- brush
- rolling pin
- tweezers
- gold thin metal leaf
- pliers
- side cutters
- super gel glue
- gloss varnish
- drill, drill bit \varnothing 0.9 mm
- Lucy Struncova´s texture sponges

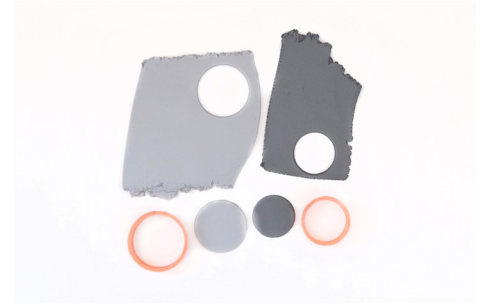
CREATING PATTERNS



Condition half a block of Cernit Pearl polymer clay and divide it into 3 equal parts. Add the black color pigment in three different proportions to create 3 shades of clay.



Mix using gloves and you will end up with 3 shades of gray - light gray, medium gray and dark gray.



Roll out sheets of gold, and all 3 gray colors to a thickness of 2.4 mm. Cut 6 circles with a diameter of 3.5 cm from the light gray sheet and 4 circles with a diameter of 3 cm from the medium gray sheet.



Add liquid clay to a small piece of dark gray clay and mix with a toothpick or silicone tip tool until the mixture has a consistency reminiscent of thick sour cream.



Randomly apply this dark gray paste to one light gray and one medium circle with a toothpick.



Use a blade and swipe, from left to right, in one movement, to spread the dark paste across both circles. Bake for 30 minutes.



Apply cornstarch on the Texture Stamp and impress the dark gray clay by rolling over with a roller.



Cut out a 2.5 cm diameter circle from the textured center of clay.



Cut out a 2.5 cm diameter circle from the gold clay sheet. Randomly add a spec or two of gold leaf and smooth to attach.

Advent Calendar



Roll out an elongated layer of gold clay to a thickness of 2.4 mm. Using a scalpel, accentuate and cut out the figured edges as desired. Carefully smooth a sheet of gold metal leaf on the clay surface.



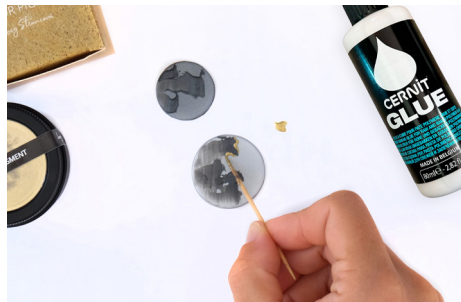
Roll the gold leaf and clay sheet through a pasta machine to a thickness of 1.8 mm. Then use your hands to give the clay a gathered arbitrary wavy shape.



Place a light gray and medium gray circle on a glass surface, press them firmly. Using sheet "E" of the Lyne Tilt's silkscreens, apply design on both circles at once using black acrylic paint. Let the design dry for a while.



Mix Lucy's gold color pigment with liquid clay until it becomes a thick paste.



Use a toothpick to apply added gold decoration to the baked surface of the circles. Bake for 15 minutes.

ASSEMBLY

Your six decorated circles and gold foil sheet are now ready for assembly. The four light gray plain circles and two medium gray plain circles are 2.4 mm thick. You can increase the thickness of these clay circles if you want more height in your project. In the final construction, the large light gray circles will be stacked three layers high, while the medium gray circles will be two layers high. The small gold and dark gray circles will remain at a single layer thickness once the assembly is complete.



Using a 3 cm diameter cutter, cut off a small piece from the gold circle.



Stack your medium gray silk screen circle on top of one plain medium gray circle, using liquid clay.



Connect the small gold circle to the side of the medium gray circle stack using liquid clay.



Stack two plain light gray circles topped with one light gray baked liquid clay accented circle using liquid clay.



Using a 3.5 cm diameter cutter, cut off a small piece from the gray circle with silkscreen pattern in desired location for the next connection.



Connect the 3 layered light gray stack with baked liquid accents into the cutaway using liquid clay.

Advent Calendar



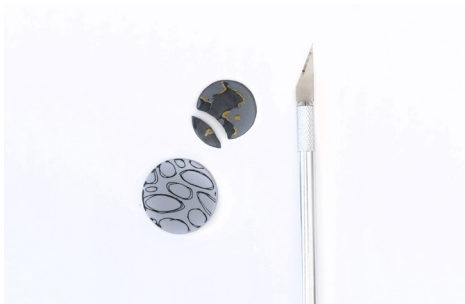
Use 3.5 cm cutter to cut indentations into the small dark gray textured circle



Attach the small dark gray circle to the large light gray stack using liquid clay. Add thin strings of gold clay to the silkscreen elements if desired.



Stack two plain light gray circles topped with one light gray silkscreen circle using liquid clay.



Use the 3.5 cm cutter to mark the medium gray liquid clay baked circle. Cut away sections with a scalpel from the baked clay. Stack this cut piece on top of one medium gray unbaked medium gray clay circle, and cut away the excess to match.



Use liquid clay to connect the remaining two circles.



Working on a baking tile for assembly, use the appropriately sized cutters to assemble your pieces into the gold sheet working on the tile.



Make sure all the components are connected well with liquid clay. Double check arrangement and create puffed areas in the gold leaf sheet. Bake for 30 minutes.

Advent Calendar

BACKING



Cut 2 cm pieces of wire from 2 of the ball pins. Create loops at both ends of each with round nose pliers. Use liquid clay and small balls of gray clay to span the gap between the two large light gray circles connecting and strengthening.



Create loops in the remaining decorative ball pins and attach in the same manner. Bake for 30 minutes.



For the back use gray clay. Roll out on 2.4 mm thickness and texture with texture sponges.



Apply liquid clay to the back of the brooch and firmly attach the gray textured clay sheet pressing with the sponge.



Trim off the excess with a scalpel covering only the circle components. Use a 1 cm round cutter to cut out 3 holes for the magnets. Bake for 30 min.



You can add 3 more ball pins lower the front surface of the brooch to give harmony to the design. To do this, use a thin 0.9 mm drill to drill short holes in 3 places on the edge of circles.



Glue the pins with super glue together with 3 magnets on the back side.



Use a glossy polymer clay varnish to cover the gold leaf surface. Supply 3 additional magnets to connect the brooch through fabric to wear.



Your brooch is complete! Now, you can choose how you'd like to wear it and enjoy showcasing your unique creation.

Advent Calendar



ADDITIONAL INSPIRATION

With her dedication to art and design, Nadia has continually amazed us with the progress she has made in her incredible creations. Let's take a closer look at some of her recent work. Many of these pieces were crafted for challenges organized through our Society's membership platform, where we announce monthly themes that inspire artists to explore deeply and express their personal stories through polymer clay art.